

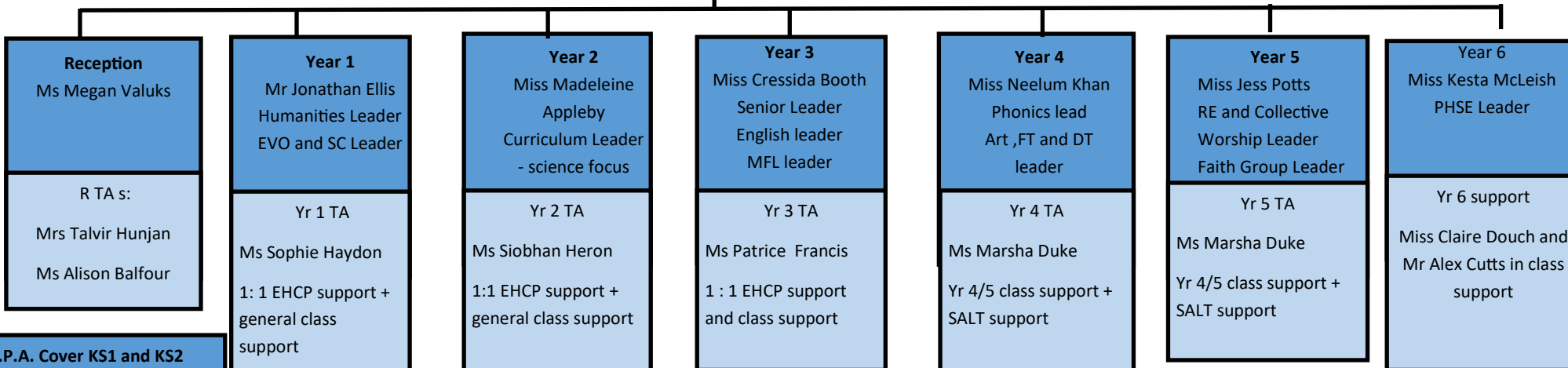
**St Jude's Church of England  
Primary School  
Staff structure 2020—2021**



**Miss Alex New - Headteacher**  
Child Protection Designated Lead  
Recruitment, Staff development and CPD Leader

**Miss Claire Douch - Deputy Headteacher**  
Lead on teaching and learning - maths leader

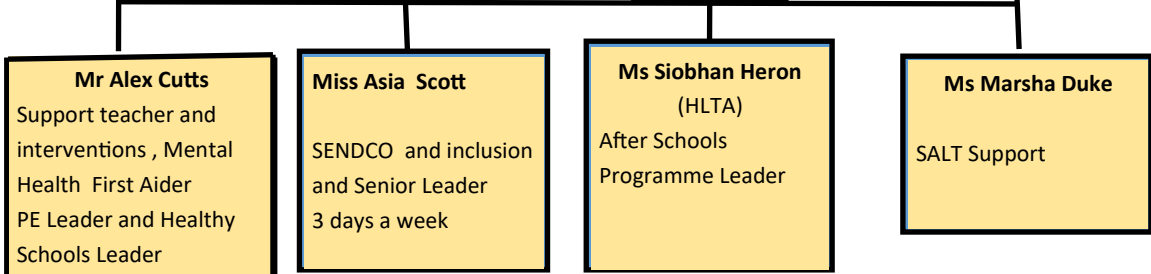
**Office staff**  
**School Business Manager**  
Ms Kelly Jackson  
**Administrative Assistant**  
Ms Ivy Miller



**P.P.A. Cover KS1 and KS2**  
Support Teacher: Alex Cutts  
P.E. Leader

**Meal supervisors** :Pilar Roca,  
Evette Johnson 7 1/2 hrs  
SG Coach - lunchtime  
support X 5 hours per week

**Inclusion**



**Premises Team**  
**Premises Officer**  
Mr Larry Gunessee  
**Cleaners**  
Meryem Tahir  
Evette Johnson  
Andrew Johnson